



INNOCENCE

PART 1: WATSON

The tool IBM Watson Natural Language Understanding “uses deep learning to extract meaning and metadata from unstructured text data. Get underneath your data using text analytics to extract categories, classification, entities, keywords, sentiment, emotion, relations, and syntax.”¹

You can “train Watson to understand the language of your business” and “[s]urface real-time actionable insights to provide your employees with the tools they need to pull meta-data and patterns from massive troves of data” and explore a demo with three sample industry domains: Legal, Financial, and Media. It’s been used to create a COVID-19 incident map and a comprehensive world law search engine.

Benefits

Cost savings

6.1

USD 6.13 million in benefits over three years¹

ROI

383%

383% ROI over three years²

Save time

50%

50% reduction in time spent on information-gathering tasks³

Revenue

5%

5% annual increase in revenue⁴

I asked it to read some tentacle porn.²

Here's some of its findings.

The screenshot shows a web page for a story titled "ANEMONE" by the user "lower". The breadcrumb trail at the top reads "Home > Anal > Anemone". The story title "ANEMONE" is displayed in large, bold, black letters. Below the title is the author's profile, which includes a circular profile picture of a woman's face, the name "lower" in blue, and statistics: "4 Stories" and "31 Followers".

The main text of the story is displayed in a large, black, sans-serif font. The first paragraph reads: "Tommy still wasn't sure whether he was awake or dreaming. All he knew was that he was naked, and the thick tentacles were gently lowering him down towards the soft bank of waving cilia that formed the centre of the anemone. The multi-coloured, pale-tipped cilia seemed to have a faint aura glowing about them, which was soothing to Tommy's eyes." The second paragraph begins: "He gasped as he felt the first of the thousands of tiny undulating fingers brush across his buttocks. Then he finally was properly sat down on the anemone's silky cushion. A second later, the snug seat lightly spread itself outward".

On the right side of the page, there is a "STORY INFO" section. It contains an information icon (i), a dark mode icon, a share icon, and a font size icon (A). Below these icons, the story's synopsis is shown: "A young man has an anal encounter with an alien being." Below the synopsis are statistics: "3.2k words", a star rating of "4.57", "132k" views, and "204" likes. There are also "10" comments indicated by a speech bubble icon.

Below the "STORY INFO" section is a "PUBLIC BETA" section. It contains a note: "Note: You can change font size, font face, and turn on dark mode by clicking the 'A' icon tab in the Story Info Box." Below the note is another note: "You can temporarily switch back to a Classic Literotica® experience during our ongoing public Beta testing. Please consider leaving".

2. lower, "Anemone," Literotica

EXTRACTION

Entities/ People, places, events, and other types of entities mentioned in your content

NAME	TYPE	CONFIDENCE
Tommy	Person	1.00
orgasmic plateau	GeographicFeature	0.13
moan	Person	0.69
rectal channel	GeographicFeature	0.15
garden centre	Facility	0.81

Keywords/ Searches content for relevant keywords.

NAME	RELEVANCE
thick tentacles	0.619868
Tommy's anus	0.574577
inch-thick bulb	0.57049
mouth-like flower	0.562588
centre of the anemone	0.559588
pale-tipped cilia	0.553137
Oh God	0.533704

Concepts/ High-level concepts that aren't necessarily directly referenced in the text

CONCEPT	SCORE
Rectum	0.971862
Anus	0.805532
Anal sex	0.691359
Prostate	0.66029
Anal canal	0.565944
Middle rectal artery	0.542048
Defecation	0.511228
Colon	0.492061
Rectal prolapse	0.476715
Sphincter	0.475409

Relations/ Recognizes when two entities are related, and identify the type of relation.

ENTITY 1	RELATION	ENTITY 2	SCORE
He	agentOf	gasped	0.997441
Tommy	agentOf	told	0.985978
he	agentOf	sighed	0.99788
head	employedBy	its	0.560627
he	agentOf	moaned	0.972693
Tommy	agentOf	groaned	0.997585
he	agentOf	moaned	0.995668
he	agentOf	moaned	0.996909
its	partOf	administrations	0.41816
Ahhh..	agentOf	sighed	0.597171
he	agentOf	sighed	0.909446
he	agentOf	groaned	0.995915
Tommy	agentOf	yelled	0.997881
his	ownerOf	yards	0.406542
he	agentOf	shouted	0.987179
his	managerOf	cock	0.325259
Tommy	colleague	body	0.374181
tentacle	agentOf	proceeding	0.856632
man	affectedBy	proceeding	0.635965
Tommy	agentOf	sighed	0.997226
he	locatedAt	here	0.306121
he	agentOf	mumbled	0.99788
head	employedBy	Its	0.390607
He	agentOf	moaned	0.997973
he	agentOf	moaned	0.997689
his	ownerOf	canal	0.290357
his	ownerOf	canal	0.248152
he	agentOf	sighed	0.997737
he	agentOf	moaned	0.997869

CLASSIFICATION

Sentiment/ Analyze the sentiment toward specific target phrases and the sentiment of the document as a whole.

Tommy still wasn't sure whether he was awake or dreaming. All he knew was that he was naked, and the thick tentacles were gently lowering him down towards the soft bank of waving cilia that formed the centre of the anemone. The multi-coloured, pale-tipped cilia seemed to have a faint aura glowing about them, which was soothing to Tommy's eyes. He gasped as he felt the first of the thousands of tiny undulating fingers brush across his buttocks. Then he finally was properly sat down on the anemone's

■ Neutral Entity ■ Positive Entity ■ Negative Entity

Edit URL

Classification ▾ Sentiment ▾

JSON</>

Full Document NEGATIVE -0.42

Entity Sentiment Scores

Tommy	NEGATIVE -0.46	
Tommy's	NEGATIVE -0.27	
Tommy curl	NEUTRAL 0	
orgasmic plateau	NEUTRAL 0	
moan	POSITIVE 0.32	
rectal channel	NEGATIVE -0.5	
garden centre	POSITIVE 0.55	

Keyword Sentiment Scores

thick tentacles	NEUTRAL 0	
Tommy's eyes	NEGATIVE -0.36	
Tommy's anus	NEGATIVE -0.65	
inch-thick bulb	NEUTRAL 0	
mouth-like flower	NEUTRAL 0	
centre of the anemone	NEUTRAL 0	
rectal sphincter	NEGATIVE -0.78	
sides of Tommy	NEUTRAL 0	
pale-tipped cilia	POSITIVE 0.68	
Tommy	NEGATIVE -0.46	
multi-coloured head	POSITIVE 0.9	
single long tendril	NEUTRAL 0	
Tommy's prostate gland	POSITIVE 0.41	
tiny undulating fingers	NEUTRAL 0	
pink anal muscle	NEGATIVE -0.86	
Oh God	NEGATIVE -0.79	
Tommy's mouth	NEGATIVE -0.51	
soft bank	NEUTRAL 0	
fleshy passage	NEUTRAL 0	
Tommy's young cock	NEGATIVE -0.26	

FEEDBACK

Cookie Preferences

Emotion/ Analyze emotion conveyed by specific target phrases or by the document as a whole.

Full Document

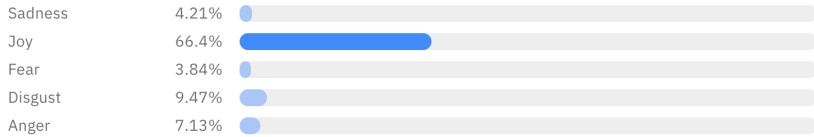


Entity Emotion Scores

Tommy

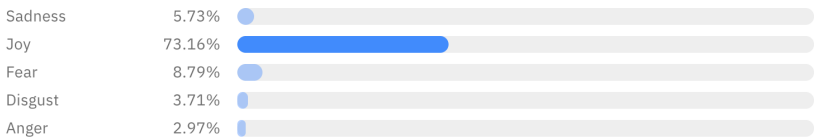


moan

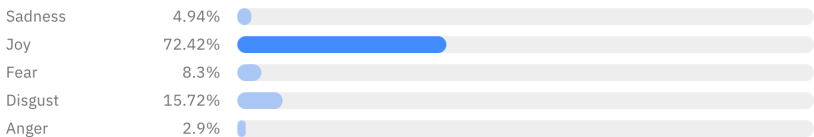


Keyword Emotion Scores

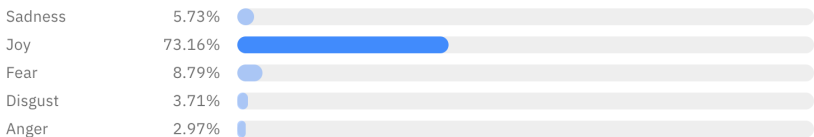
thick tentacles



inch-thick bulb



centre of the anemone



CLASSIFICATION

Categories/ Categorize your content using a five-level classification hierarchy.

HIERARCHY	SCORE
/healthy living/weight loss	0.689104
/medical health/surgery	0.647438
/style & fashion/men's fashion/ men's clothing/men's underwear and sleepwear	0.641971
/family and relationships	0.604814
/style & fashion/men's fashion/men's clothing/men's business wear	0.588252
/healthy living/women's health	0.581482
/books and literature/young adult literature	0.578439
/family and relationships/single life	0.565321
/family and relationships/divorce	0.559363
/family and relationships/marriage and civil unions	0.557517

SUMMARY

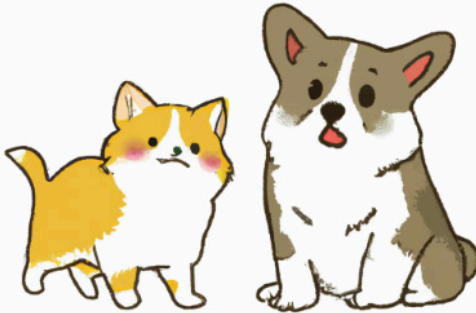
In summary,

- Watson thinks this text is about health and weight loss or surgery or men's clothing.
- Overall, a third of emotions conveyed are joyful, with a little sprinkling of sadness and fear in equal amounts.
- However, the text is negative with regards to Tommy and his parts (eyes, mouth, rectal sphincter, etc.), with the exception of Tommy's prostate gland, but neutral to positive towards the anemone and its parts (pale-tipped cilia, multi-coloured head).
- Relationally, Tommy is a colleague of his body, and the manager of his cock. The anemone's tentacle is employed by the anemone.
- Trained to interpret the text from a business perspective, Watson can recognize several Concepts that are not safe for work with the exception of a medical field, like "Anal sex" and "Prostate."

PART 2: DALL-E

I tried to get Dall-E to illustrate the story with the input “naked young man suspended over an anemone by its tentacles” but quickly got a warning:

It looks like this request may not follow our content policy.



The content policy states, “Do not attempt to create, upload, or share images that are not G-rated or that could cause harm. [...] Sexual: nudity, sexual acts, sexual services, or content otherwise meant to arouse sexual excitement.”³



Some commenters on a thread regarding adult content on the r/OpenAI subreddit speculate:

“I think (once it’s unlocked or an equal or stronger competitor is released) it’s the beginning of a new era of porn. People will be able to train and prompt the AI to create images (and then video) that is super-tailored to an individual’s taste and preferences.”⁴

“I mean the appeal of onlyfans seems to be the personalization or whatever so as soon as someone combines a GPT 3 chatbot with a good image generation AI it could very well be over for 50% of OF models”⁴

For now, I asked DALL-E to put Tommy in a swimsuit. Here are my favorite results and their variations.









